

# **Vehicle Probe Project - Overview**

**William Stoeckert**  
Information and Payment Services Program Coordinator  
I-95 Corridor Coalition

**Transportation Research Board**  
**January 2010**  
**Session 531**

# Agenda

- The I-95 Corridor Coalition
- Vehicle Probe Project
- Agency & Coalition Applications

# The I-95 Corridor Coalition is....

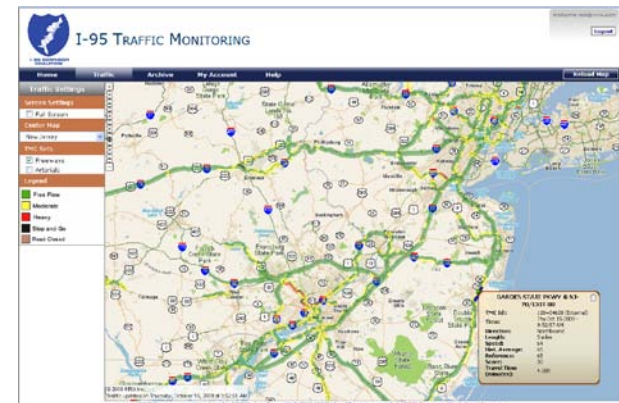
- An alliance of transportation agencies, toll authorities and related organizations, including public safety from Maine to Florida with affiliates in Canada
- A successful model for interagency cooperation and coordination since the early 1990's

# Coalition 2040 Strategic Vision

Develop an architecture for state-of-the-art regional operations and management, including real-time information

# Vehicle Probe Project

- This is a *groundbreaking* initiative among public, private and academia.
- 18 months of real-time data to seven contiguous states – New Jersey to South Carolina
- *Continuous, comprehensive data validation*, improving access to information, and expanding project limits.



# Milestones

- Initial Task Order: February 2008
- ***NJ Expansion Task Order: June 2008***
- ***Service Operational: July 1, 2008***
- Initial Validation: July – October 2008
- ***NC Expansion Task Order: November 2008***
- SAFETRIP Task Order: January 2009
- Initial Validation Results Published: January 2009
- ***SC Expansion Task Order: August 2009***



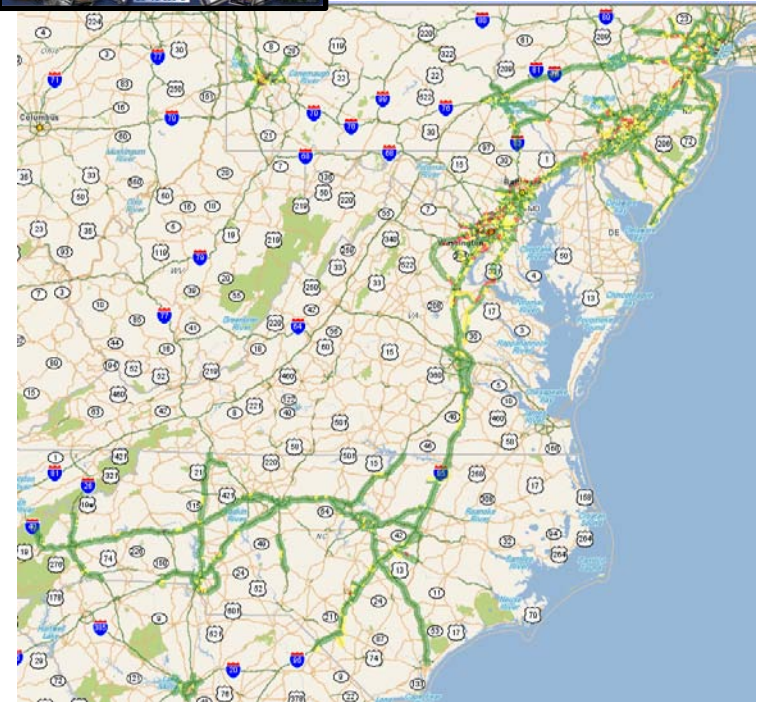
# Project Highlights

## Contract

- 3 years – options to 10 years
- Task Order contract with U of Md
- Member agencies can:
  - Expand coverage, Add source data
  - Access consulting services, Extend project duration

## Core Task

- Traffic data feed
- Monitoring web site
- Data archive
- Coverage
  - ~1500 freeway miles
  - ~1000 arterial miles (donated)



# Project Requirements

## RFP Requirements

### *What*

- Avg Error 10 MPH
- Avg Bias: 5 mph
- For 4 Bins: <30, 30-45, 45-60, >60 MPH
- Latency:  $\leq 8$  minutes
- Update Rate:  $\leq 5$  minutes
- Data Reliability:  $\geq 95\%$
- Data Availability:  $\geq 99\%$

### *When*

- Flow > 500 VPH on a segment

### *Where*

- Core Freeways, Expansions
- Not Core Arterials

## Validation

### *Through September 2009*

Speed Range	Avg Absolute Error (MPH)	Avg Bias (MPH)	Hours of Data
Requirement	< 10 MPH	< +/-5 MPH	
0 – 30 MPH	4.8	2.7	233
30 – 45 MPH	6.0	2.1	288
45 – 60 MPH	2.1	0.0	1911
> 60 MPH	2.0	-1.9	9249
TOTAL	2.2	-1.4	11681



# Project Status

## Current Coverage

- Freeways: ~ 4700 Centerline miles
- Arterials: ~ 900 Centerline miles
- From NJ to SC
- ~ 11,000 Road Segments

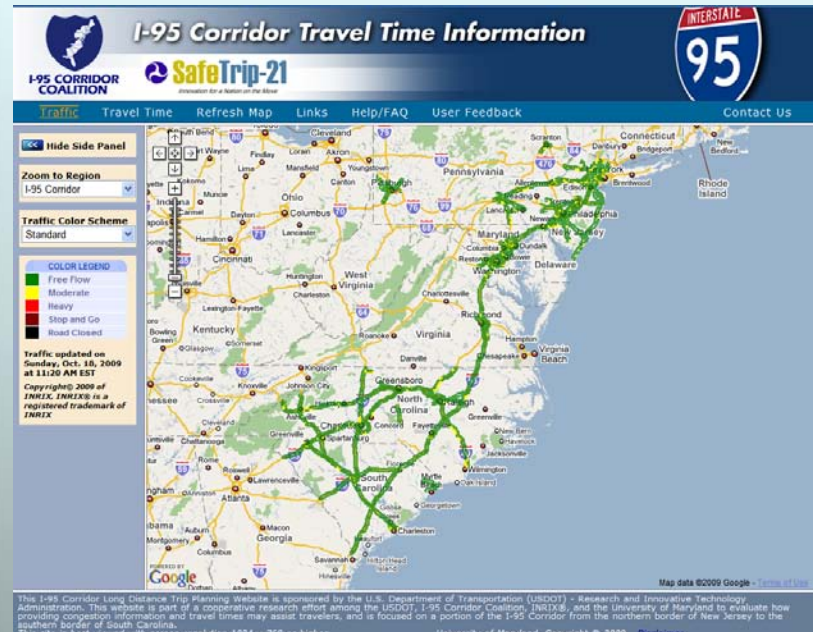
## Data Access (through 12/7)

- 15 agencies executed DUA
- >300 monitoring site users
- >30 data feed users

## Availability since July 1, 2008

- Monitoring Site: 99.90%+
- Data Feed: 99.93%+

## New...Traffic Tile Overlays/SAFETRIP



[www.i95travelinfo.net](http://www.i95travelinfo.net)

# Vehicle Probe Project – Agency & Coalition Applications

- Web applications
- VP monitoring site to monitor freeways and detect issues
- Combining VPP data with other sensor data
- 511 operations
- Planning
- Performance measures
- SafeTrip 21



# Thank You



I-95 CORRIDOR  
COALITION

[www.I95Coalition.org](http://www.I95Coalition.org)