

SAFETRIP-21 and the I-95 Corridor Coalition

George Schoener, Executive Director
I-95 Corridor Coalition

Transportation Research Board
January 2010



Agenda

- The I-95 Corridor Coalition
- Vehicle Probe Project
- SafeTrip 21 and the I-95 Corridor Coalition



The I-95 Corridor Coalition is....

- An alliance of transportation agencies, toll authorities and related organizations, including public safety from Maine to Florida with affiliates in Canada
- A successful model for interagency cooperation and coordination since the early 1990's



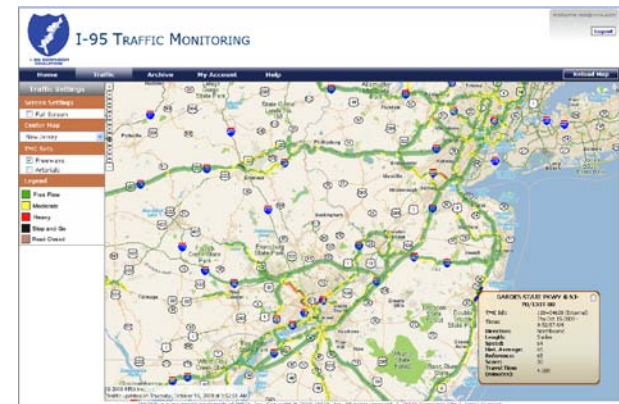
Coalition 2040 Strategic Vision

Develop an architecture for state-of-the-art regional operations and management, including real-time information



Vehicle Probe Project

- This is a groundbreaking initiative among public, private and academia.
- 18 months of real-time data to seven contiguous states – New Jersey to South Carolina
- Continuous, comprehensive data validation, improving access to information, and expanding project limits.



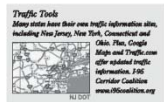
Timeline/Milestones

- Procurement Process

- RFIs: October 2006, February 2007
- RFP Published: April 2007
- Proposals Submitted (5): June 2007
- Contract Awarded: December 2007

- Early Project Milestones:

- Initial Task Order: February 2008
- **NJ Expansion Task Order: June 2008**
- **Service Operational: July 1, 2008**
- Initial Validation: July – October 2008
- **NC Expansion Task Order: November 2008**
- SAFETRIP Task Order: January 2009
- Initial Validation Results Published: January 2009
- **SC Expansion Task Order: August 2009**



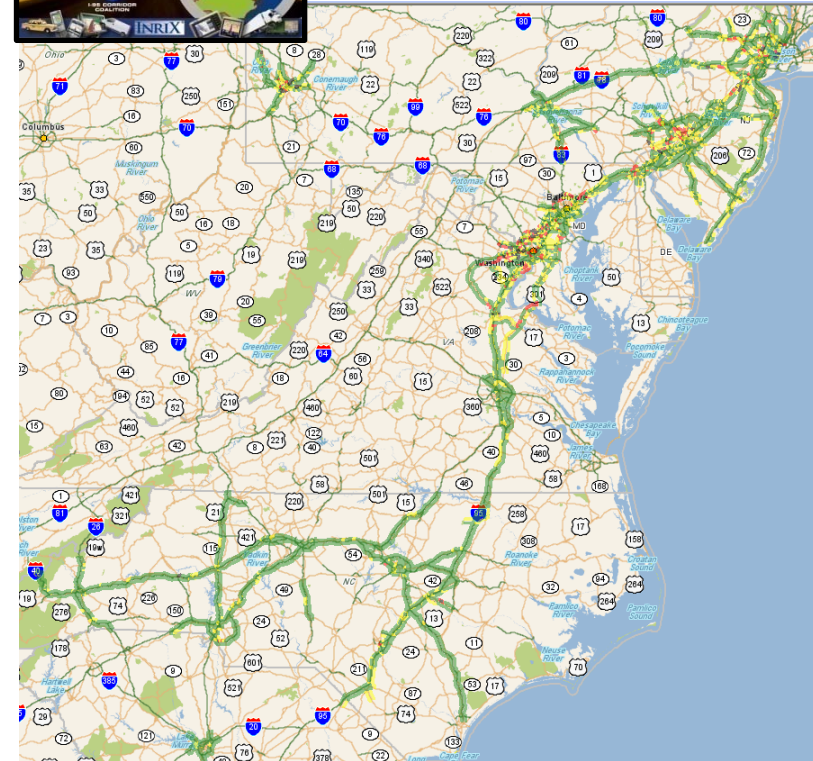
Project Highlights

Contract

- 3 years – options to 10 years
- Task Order contract with U of Md
- Member agencies can:
 - Expand coverage, Add source data
 - Access consulting services, Extend project duration

Core Task

- Traffic data feed
- Monitoring web site
- Data archive
- Coverage
 - ~1500 freeway miles
 - ~1000 arterial miles (donated)



Project Requirements

RFP Requirements

What

- Avg Error 10 MPH
- Avg Bias: 5 mph
- For 4 Bins: <30, 30-45, 45-60, >60 MPH
- Latency: \leq 8 minutes
- Update Rate: \leq 5 minutes
- Data Reliability: \geq 95%
- Data Availability: \geq 99%

When

- Flow > 500 VPH on a segment

Where

- Core Freeways, Expansions
- Not Core Arterials

Validation

Through September 2009

| Speed Range | Avg Absolute Error (MPH) | Avg Bias (MPH) | Hours of Data |
|-------------|--------------------------|----------------|---------------|
| Requirement | < 10 MPH | < +/-5 MPH | |
| 0 – 30 MPH | 4.8 | 2.7 | 233 |
| 30 – 45 MPH | 6.0 | 2.1 | 288 |
| 45 – 60 MPH | 2.1 | 0.0 | 1911 |
| > 60 MPH | 2.0 | -1.9 | 9249 |
| TOTAL | 2.2 | -1.4 | 11681 |

Project Status

Current Coverage

- Freeways: ~ 4700 Centerline miles
- Arterials: ~ 900 Centerline miles
- From NJ to SC
- ~ 11,000 Road Segments

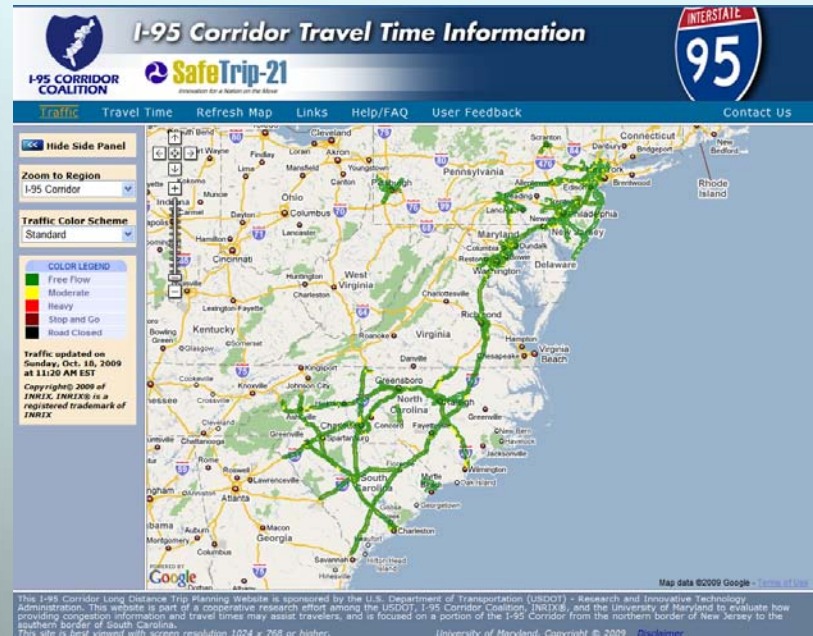
Data Access (through 12/7)

- 15 agencies executed DUA
- >300 monitoring site users
- >30 data feed users

Availability since July 1, 2008

- Monitoring Site: 99.90%+
- Data Feed: 99.93%+

New...Traffic Tile Overlays/SAFETRIP

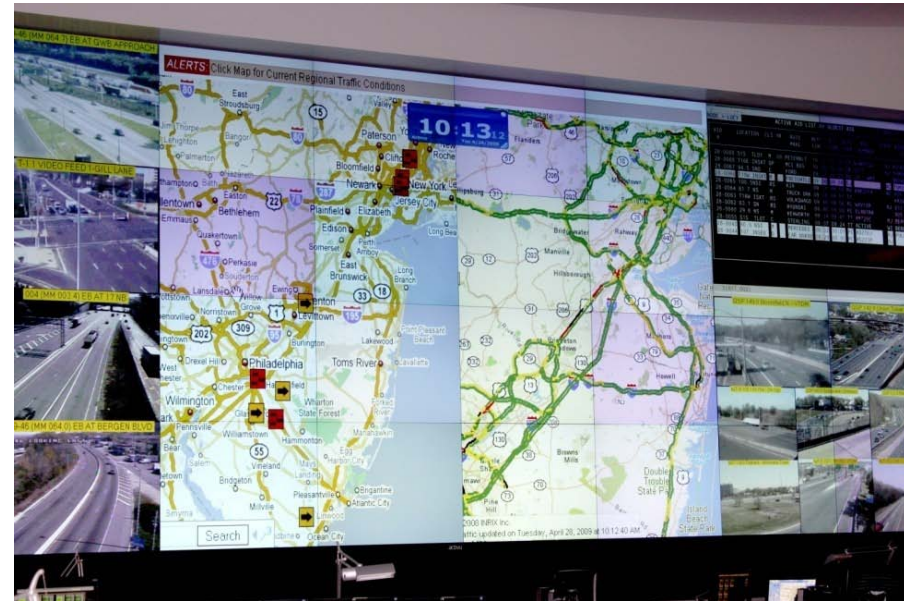


www.i95travelinfo.net



Vehicle Probe Project – Agency Applications

- Web applications
- VP monitoring site to monitor freeways and detect issues
- Combining VPP data with other sensor data
- 511 operations
- Planning
- Performance measures



SAFETRIP 21 & the I-95 Corridor Coalition: Projects

- Long distance trip planning using real-time travel time data (public website)
- Displaying travel times in public areas (2 VA Welcome centers & a local mall)
- Provide travel time information to airport users

Long Distance Trip Planner

- A website where travelers can obtain the up-to-date travel times and congestion information on routes to their destination from Portland, Maine to Orlando, Florida.



Public Displays

- Leverages existing VDOT efforts
- Tysons Corner Center (yes, a shopping mall)
 - Concurrent with Virginia's Mega Projects
- Virginia Welcome Centers along I-95
 - Fredericksburg
 - Skippers

Provide travel time information to airport users

- Make the information available through kiosks located within the BWI terminal, through wireless devices (e.g., cellular phones), and through the Airport's website.



Thank You



I-95 CORRIDOR
COALITION

www.I95Coalition.org

