

Keith Golden, P.E.

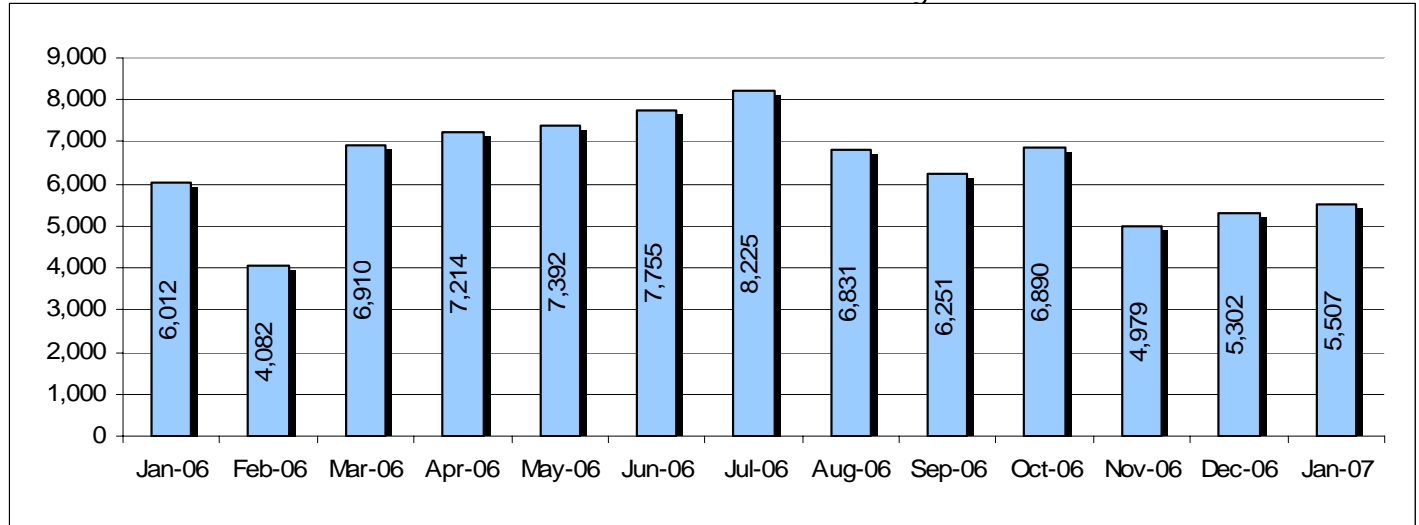
State Traffic Operations Engineer

Gary Milsaps

Incident Response Manager

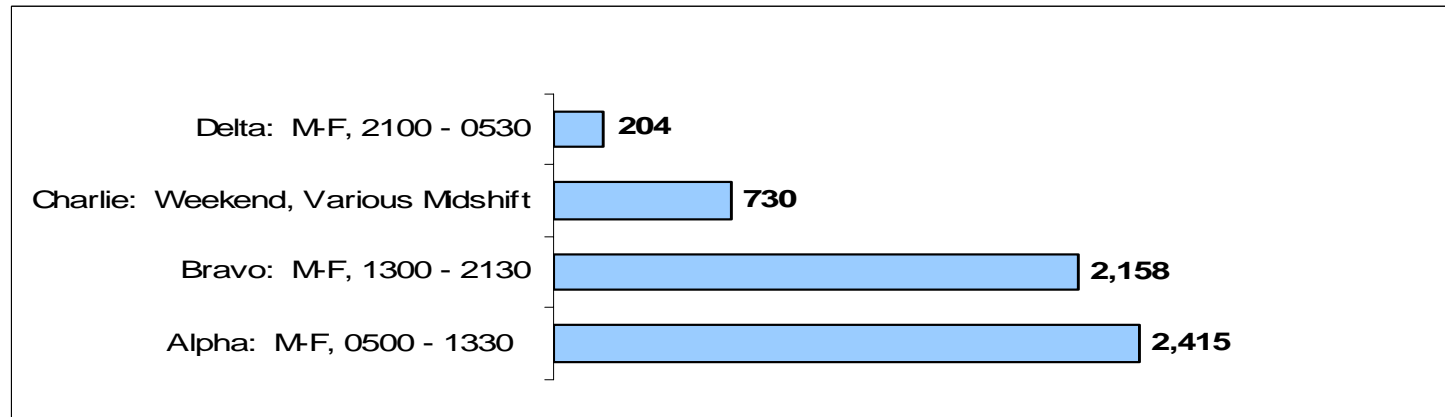
January 2007

Total HERO Assists By Month*

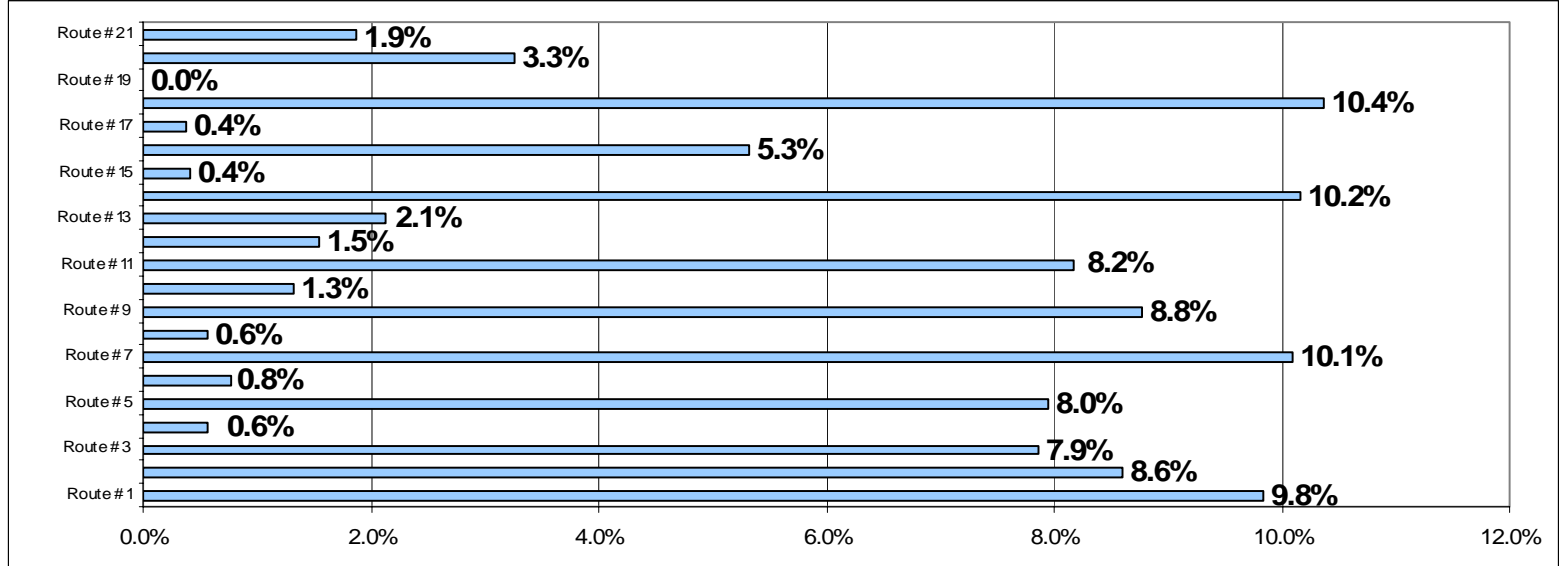


* Includes all incident categories: accidents, stalls, debris, property damage, abandoned vehicles & other

Total HERO Assists By Shift

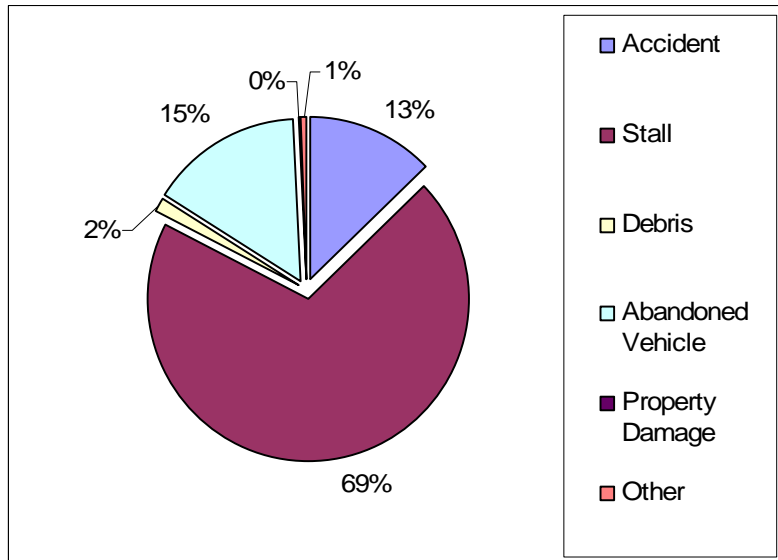


Total Assists By Route Number*

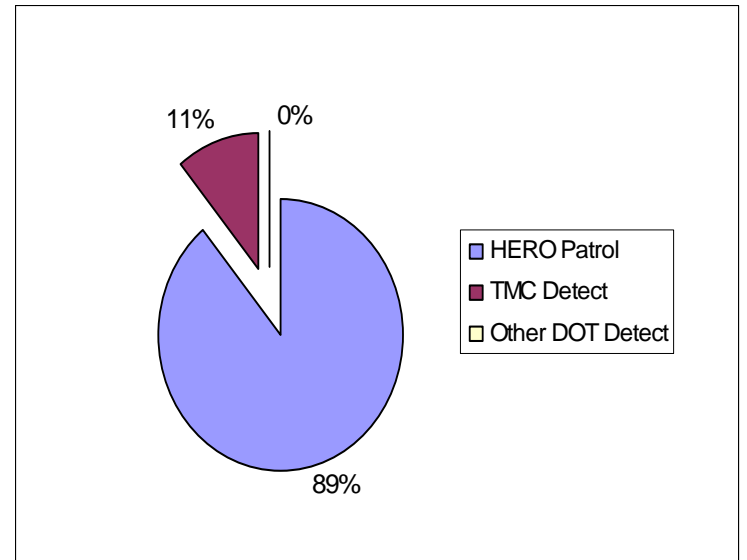


* See HERO route map on Page 3 for a location reference

Total Assists by Type



Total Assists by Detection Type



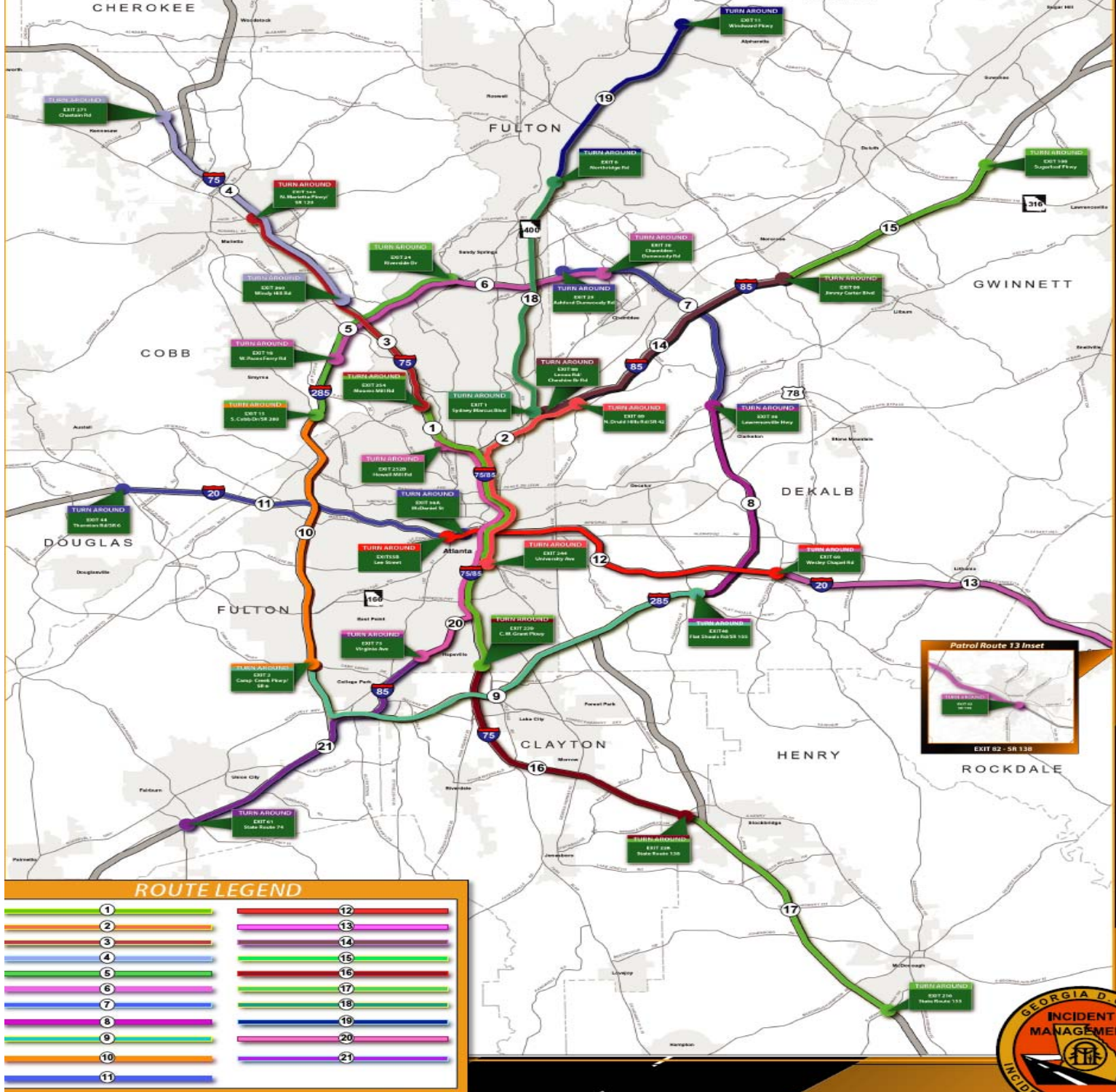
Highway
Emergency
Response
Operator
Monthly Statistics

January
2007

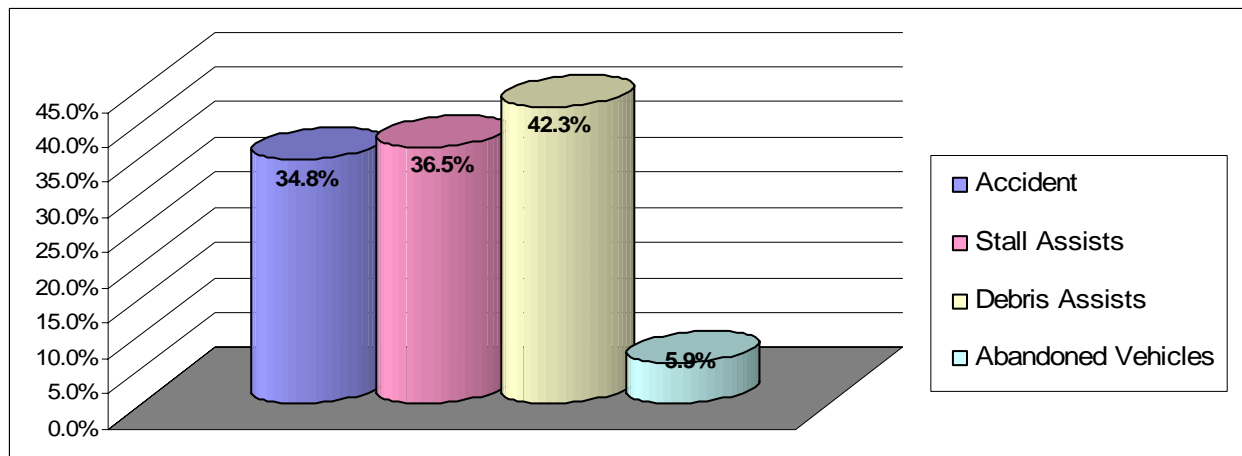


Highway Emergency Response Operator Monthly Statistics

January 2007



Most Active Routes by Assist Types



Highway
Emergency
Response
Operator

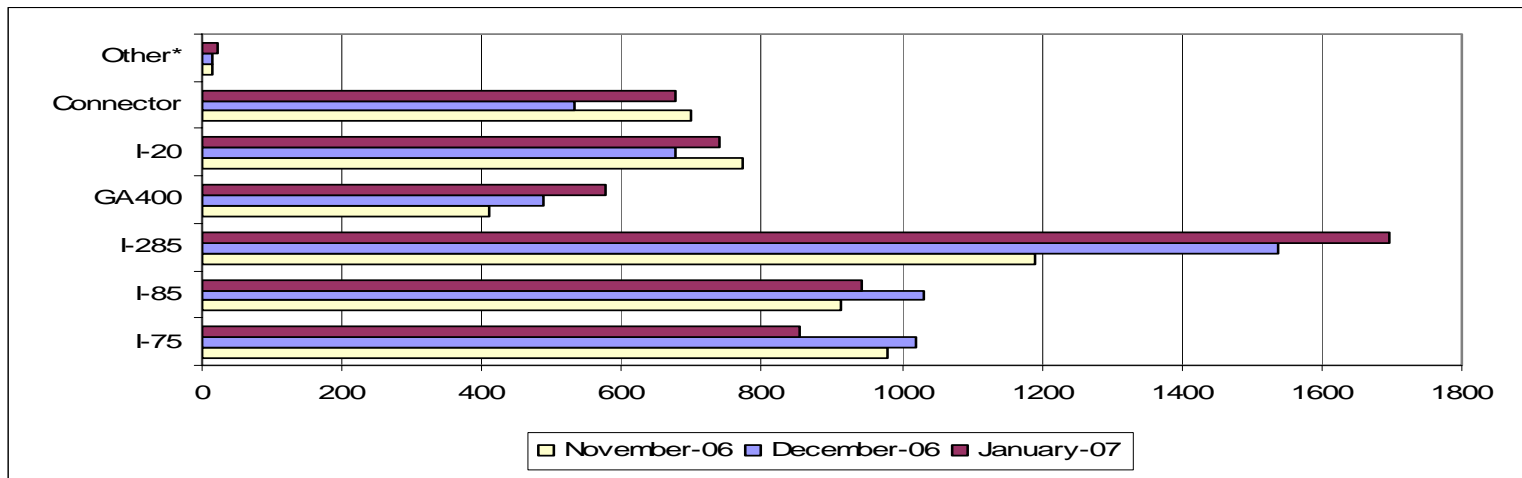
Monthly Statistics

Routes with most:							
Accident Assists		Stall Assists		Debris Assists		Abandoned Vehicles	
Route # 2	83	Route # 18	439	Route # 11	13	Route # 9	121
Route # 1	73	Route # 1	415	Route # 9	10	Route # 14	109
Route # 14	65	Route # 7	413	Route # 3	10	Route # 18	65
Total # of Assists	221		1,267		33		295
% Total of All							
Routes:	34.8%		36.5%		42.3%		5.9%

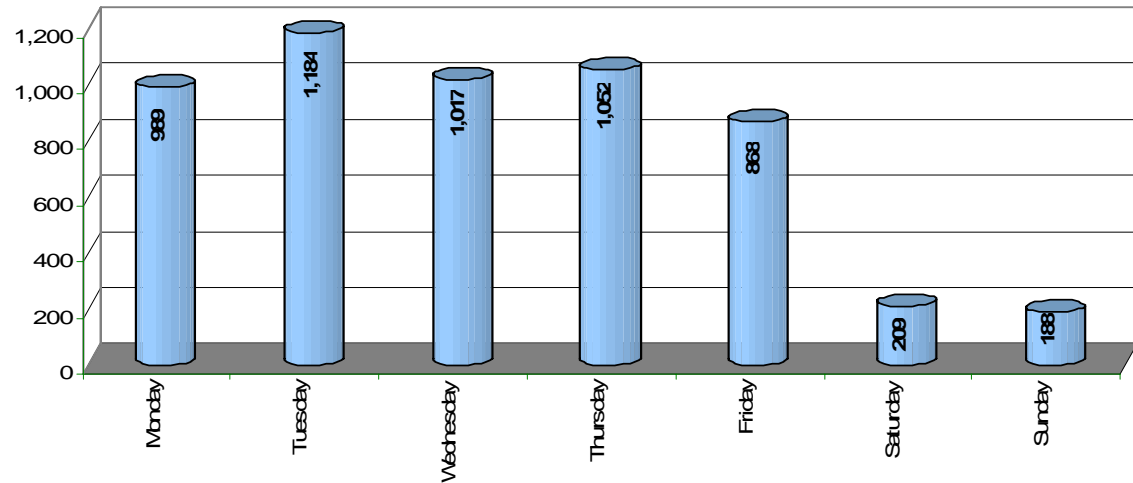
January

2007

HERO Assists by Roadway

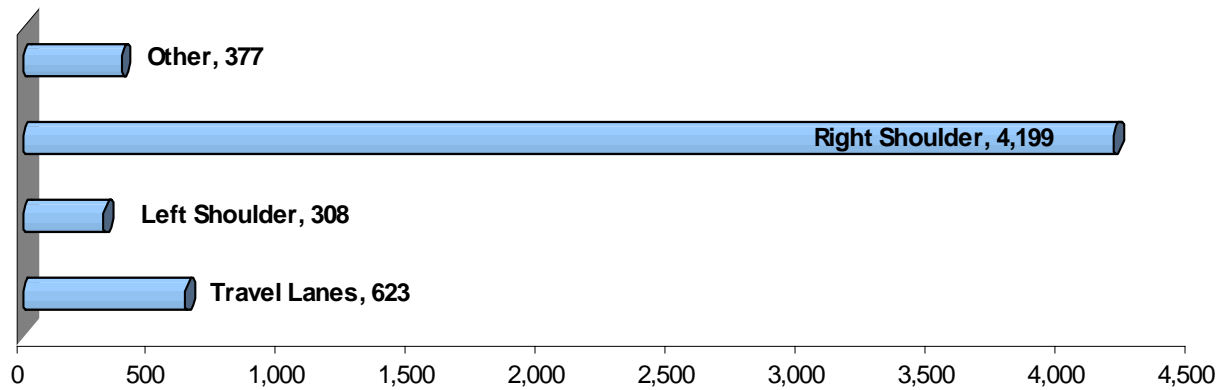


HERO Assists Worked by Day of Week



Lanes Blocked During Assists

Number of times the following lanes have been blocked upon a HERO unit's arrival



* Other Includes: Auxiliary Lanes, Coll./Dist., Entrance Ramps, Exit Ramps and HOV

Highway
Emergency
Response
Operator
Monthly Statistics

January

2007

Total HERO Assists By Month – This chart reflects the total number of assists that the HERO's have made stops for over the past months. Assists include: accidents, stalls, debris, property damages, abandoned vehicles and 'other'.

Total HERO Assists By Shift – This chart reflects the four scheduled HERO shifts (Alpha – Bravo), their hours of duty (note – Charlie shift works weekends and 2 shifts during the week), and their total assists they have been on the scene of over the past month.

Total Assists By Route Number – The HERO's are assigned routes one through thirteen and patrol only their route over the course of their shift (unless pulled 'off-route' by either a Supervisor or HERO Dispatcher). This chart reflects the total number of HERO assists that have been worked over the past month, by route number. Note – the next page reflects the coverage of each route on a map of the metro-Atlanta area.

Total Assists by Type – This chart breaks down by assist type the stops made by the HERO's. Assist types include: accidents, stalls, debris removal, property damage, abandoned vehicle, and other (i.e. construction support)

Total Assist by Detection Type – HERO's list on their log sheets after each incident how they came across the incident. They either ran across the incident while on patrol and stopped (referred to as HERO Patrol), they are notified via SouthernLinc radio of the incident and its location by HERO Dispatchers (referred to as TMC detect) or another agency / DOT department identifies the problem and requests HERO assistance (referred to as Other DOT Detect).

HERO Routes – This page will remain static each month. Its purpose is to visually show the routes that are associated with each route number (1 – 13). Solid color lines reflect a HERO route at its peak (during rush hours), a dashed black and color line show the same route during its off peak hours (after rush hour periods), and a solid black line reflects a segment of roadway not yet routinely patrolled by HERO's.

Most Active Routes by Assist Types – This chart and table show the 3 most active routes for each of the categories of: accidents, stalls, and debris assists. Frequently a majority of these three assist types will fall on three extremely active routes. This chart shows what the three most active routes are in each of these assist categories in comparison to the entire number of assists offered over all routes for that category. Month over month, you will notice that just under half of the total assists occur on the top 3 routes under each category.

HERO Assists by Roadway – This chart reflects the total number of HERO assists there have been on each of Atlanta's major roadways. 'Others' would include: SR166, I-575, I-675, etc.

HERO Assists Worked by Day of Week – This chart reflects the number of HERO assists there have been by the day of week. Along with the previously described charts showing assists by time of day (shift) and route number, a good decision can be made as to when and where HERO's should be scheduled.

Lanes Blocked – This chart describes which lane segment was blocked when the HERO first arrives on the scene. While a vast majority of assists are come across on the right shoulder, many are also discovered on the left should, travel lanes and 'other' (other can be defined as the auxiliary lane, exit-ramp, on-ramp, HOV, and coll. dist.)